



RCO

# COMPANY PROFILE

# INTRODUCTION TO RCO ENGINEERING:

Established in 1999, RCO Engineering is a leading company specializing in engineering works and power optimization. With a strong focus on customer satisfaction, we cater to a wide range of clients, including multinationals and individual customers, tailoring our services to meet their specific requirements.

**H**eadquartered in Karachi, Pakistan, we have strategically placed technical and support teams in all major cities across the country, ensuring nationwide coverage and accessibility for our clients.

We firmly believe in upholding the highest quality standards, aiming to not only meet but exceed the expectations of our clients. Our work ethic is rooted in teamwork and ethical practices, as we foster an environment where personnel integrate their skills and efforts to excel continuously.

At RCO Engineering, we are committed to surpassing your expectations, and our unwavering integrity sets us apart within the industry. Our dedicated team strives to deliver the best possible service, ensuring customer satisfaction at every step.

RCO Engineering prides itself on delivering quality performance, efficiency, and aesthetics in every project. We aspire to become your go-to partner for engineering solutions, addressing your challenges with innovative and reliable services.





# MISSION & VISION

## **OUR MISSION:**

Our mission is to ensure that problems are properly analyzed and to treat them with the most up-to-date technology, equipment and products available in our industry and to deliver a level of satisfaction unparalleled in the industry.

## **OUR VISION:**

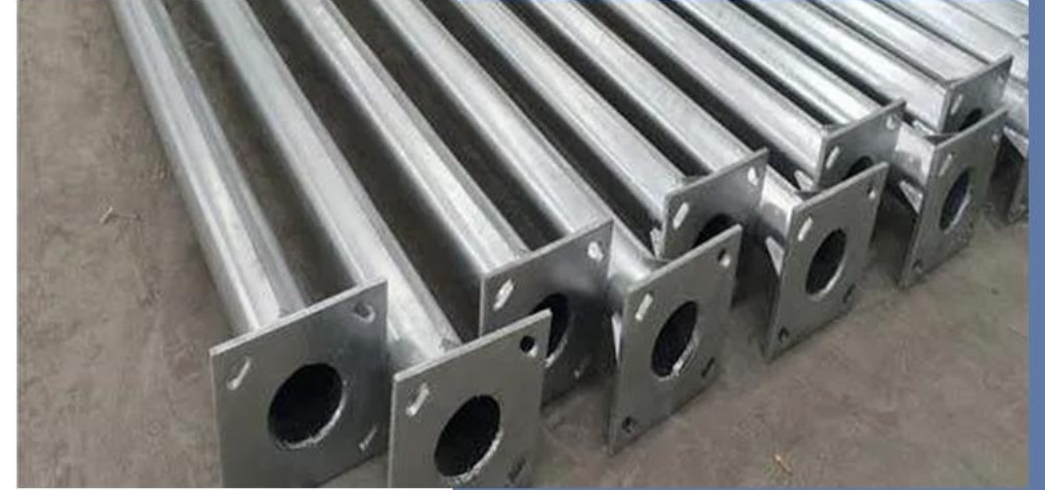
Our Vision is to become one of the nation's leaders in the service industry. We strongly believe in committing ourselves to excellence by providing the best client support in all of our communities through prompt response and exceptional services across Pakistan.



# MANUFACTURING SERVICES:

## Poles:

As a direct manufacturer of poles, RCO Engineering takes pride in offering a diverse range of pole categories that cater to various applications and customer requirements. With our expertise in pole manufacturing and commitment to customization, we deliver high-quality poles that meet the specific needs of our clients.



## High Mast Poles: (Galvanized and Epoxy Paint)

RCO Engineering specializes in the production of high mast poles, which provide efficient and effective illumination for large areas. Our high mast poles are available in different designs, including octagonal and tabular poles, ensuring robust structures that withstand harsh weather conditions while delivering optimal lighting solutions.



## **Lighting Poles:** **(Galvanized and Epoxy Paint)**

We manufacture lighting poles that prioritize safety and protection against lightning strikes. Our range includes tabular poles, conical octagonal poles, and conical round poles, designed to effectively dissipate lightning energy and safeguard surrounding areas and structures. Lighting poles are designed with a focus on durability, ensuring they can withstand environmental elements and provide long-lasting support for lighting fixtures. Additionally, design criteria are considered to ensure structural integrity, wind resistance, and aesthetic appeal.





## **Electric Poles:** **(Galvanized and Epoxy Paint)**

RCO Engineering produces electric poles that play a crucial role in electrical power distribution networks. Our electric poles are engineered and fabricated to meet industry standards, ensuring reliable and efficient transmission of electricity.

## **Fancy Poles / Decorative Poles:** **(Galvanized and Epoxy Paint)**

Adding a touch of elegance and aesthetic value to outdoor spaces, our fancy poles or decorative poles are meticulously crafted with attention to detail.

These poles enhance the visual appeal of streets, parks, commercial complexes, and other public areas, reflecting our commitment to both functionality and design.







## **Mobile Lighting Towers:** **(Galvanized and Epoxy Paint)**

In addition to our pole offerings, RCO Engineering provides mobile lighting towers that offer temporary lighting solutions for various applications. These portable towers are designed to deliver reliable and efficient illumination for events, construction sites, and outdoor activities, ensuring optimal visibility wherever needed.



## **Structured Poles:** **(Galvanized and Epoxy Paint)**

Our structured poles are designed for specialized applications, providing versatile support and stability for various installations. These poles are engineered with precision and durability to meet specific project requirements and industry standards. Structured poles offer excellent load-bearing capabilities and are ideal for applications that demand enhanced structural integrity. These poles are commonly used in telecommunications, surveillance systems, and other installations where stability and reliability are paramount.

Structured poles are manufactured using high-quality materials and advanced engineering techniques, ensuring their durability and long-lasting performance. We offer a variety of structured pole designs to cater to different project specifications, ensuring seamless integration and optimal functionality.

Whether you need support for telecom antennas, security cameras, or other specialized equipment, our structured poles deliver the strength and stability required for your specific application. As with all our products, we offer customization options to tailor the design, dimensions, and specifications of structured poles according to the unique needs of our clients.

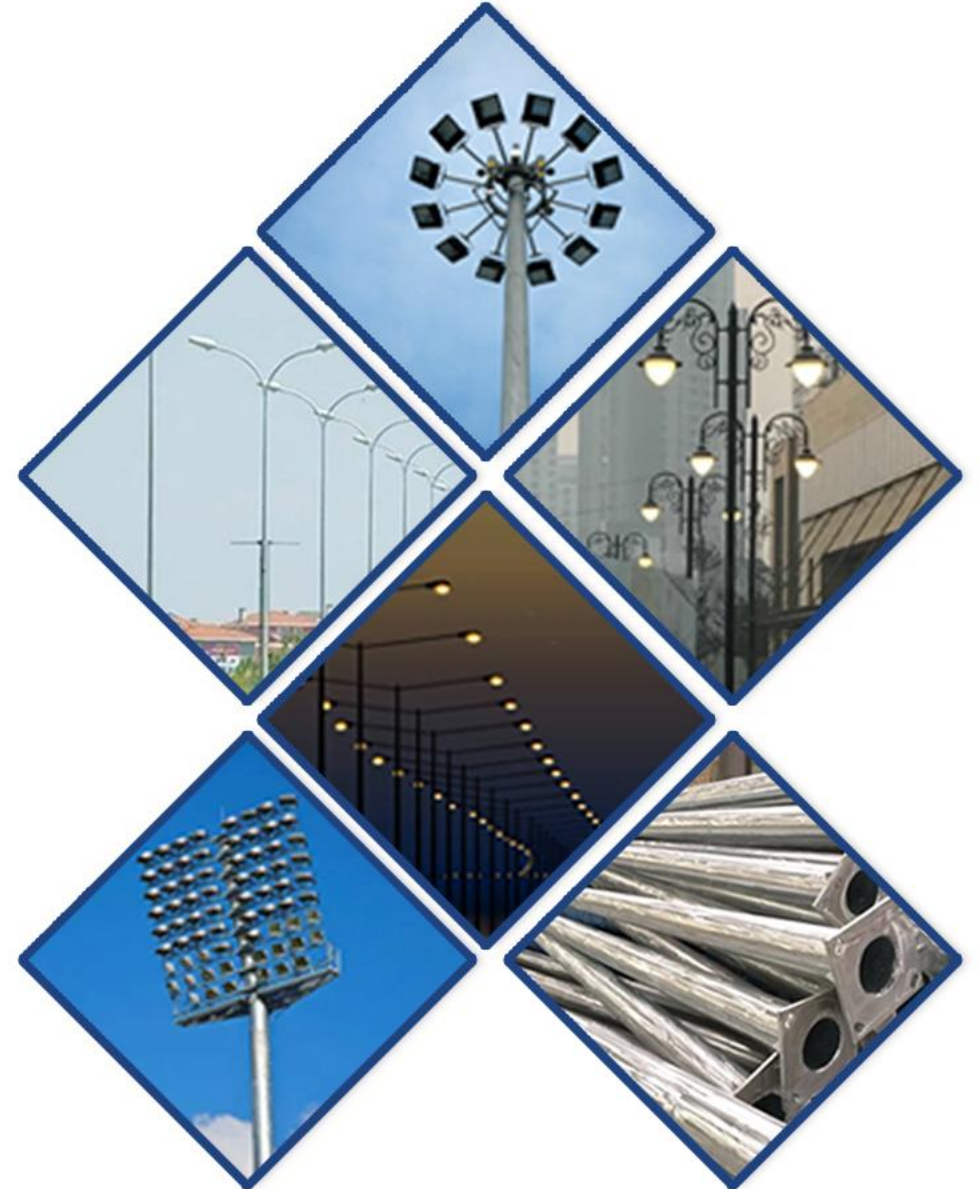




# Customization:

At RCO Engineering, we understand that each project has unique requirements. That's why we offer customization options for our poles, allowing us to tailor the design, dimensions, and specifications to meet the specific needs of our clients. Our dedicated team works closely with customers to understand their requirements, ensuring that the manufactured poles perfectly align with their expectations and project goals.

With our direct manufacturing capabilities, commitment to customization, and adherence to high-quality standards, RCO Engineering is your reliable partner for all your pole needs. Whether it's high mast poles, lighting poles, electric poles, fancy poles, or mobile lighting towers, we deliver durable, efficient, and custom-tailored solutions to meet your specific project requirements.





# LV Switchgears Panels:

With our extensive knowledge and expertise in custom-built and standard LV switch Gears panel construction, RCO Engineering excels in designing and manufacturing LV Panels that meet specific customer requirements. Our range of offerings includes both wall-mounted and floor-standing switchboards, providing ultimate flexibility to design and build distribution systems for various applications.

Our distribution panels feature a modular building block design, allowing for an efficient and compact system with a high stacking density, thus optimizing space utilization. As the energy needs of your application evolve, our modular design enables easy extension and modification of the switchboard system.

At RCO Engineering, we understand that every customer's needs are unique. Therefore, all our distribution panels are individually designed and tailor-made to suit your specific requirements. We consider factors such as available space, cable entries, access to the switch room, and any other site-specific requirements to ensure optimal functionality and convenience.

## Our scope of services includes the following:

- Lighting DB / Power
- Power Factor DB (Improvement Panel)
- ATS Panel
- MCC Panel / ASD / DOL Starter Panel
- Synchronizing panels
- Bus-tie Duct
- Bus Coupler Panel
- Feeder Pillars (Weather Proof)
- LT Panel



# Types of LV Switchgears Panels



**Synchronizing  
Panel**



**Feeder Pillar  
Panel**



**Bus Coupler  
Panel**



**Main LT Panel**



**MCC Panel**



**ATS Panel**



# Types of LV Switchgears Panels



**LT Panel**



**DOL Starter  
Panel**



**Concealed Flush  
Type Panel**



**Surface Type DB**



**Powder DB Panel**



**Power Factor DB**

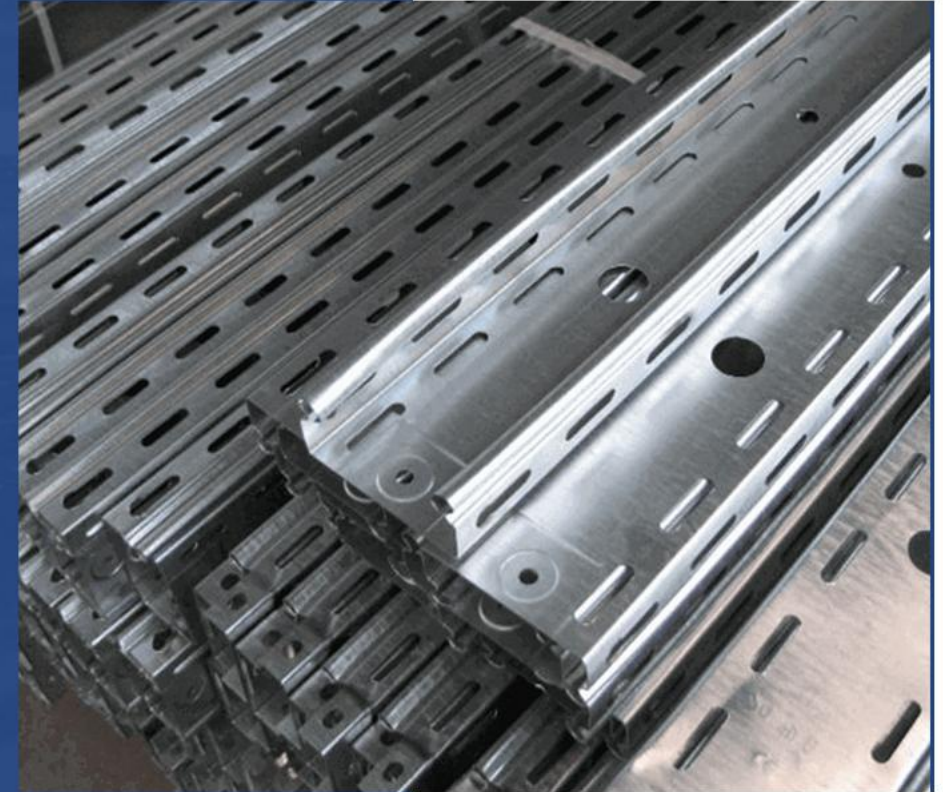
# Cable Trays:

## (Perforated and Non- Perforated)

RCO Engineering offers a wide range of cable trays, including both perforated and non-perforated options, to meet the diverse needs of our customers. Our cable trays are available in two popular finishes: galvanized and powder coated, providing enhanced durability and protection for cable management systems.

## Galvanized Cable Trays:

We manufacture galvanized cable trays that are designed to withstand harsh environmental conditions and offer long-term corrosion resistance. The trays undergo a galvanization process where a protective zinc coating is applied to the surface, ensuring excellent durability and extended service life. Galvanized cable trays are particularly suitable for outdoor installations and environments that are exposed to moisture, humidity, and corrosive elements meeting specific microns as required.





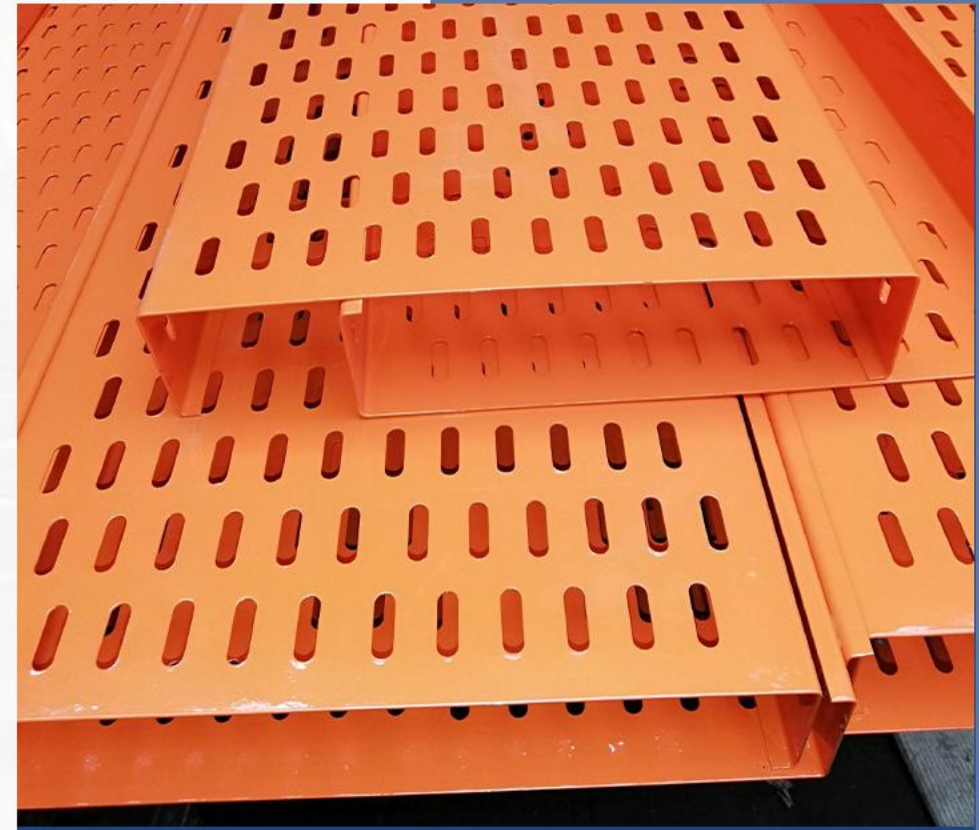
# **Cable Trays:**

## **(Perforated and Non- Perforated)**

RCO Engineering offers a wide range of cable trays, including both perforated and non-perforated options, to meet the diverse needs of our customers. Our cable trays are available in two popular finishes: galvanized and powder coated, providing enhanced durability and protection for cable management systems.

## **Powder Coated Cable Trays:**

RCO Engineering also offers powder-coated cable trays that provide a durable and aesthetically pleasing solution for cable management. The trays are coated with a high-quality powder coating that not only enhances the tray's appearance but also provides an additional layer of protection against corrosion, scratches, and UV radiation. Powder-coated cable trays are commonly used in indoor installations, commercial buildings, and areas where aesthetics and visual appeal are important.



---

# Customization

At RCO Engineering, we believe in the power of customization. We understand that each project and customer is unique, with specific requirements and preferences. That's why we offer a high degree of customization across our product lines.

From cable trays and LV distribution panels to poles and lighting towers, we work closely with our clients to understand their individual needs. Our expert team collaborates with customers to develop tailored solutions that align precisely with their specifications. We take pride in our ability to adapt and deliver products that meet their exacting standards, ensuring maximum functionality and satisfaction.

---



---

## **After Sales Services:**

RCO Engineering places great emphasis on providing comprehensive after-sales services to our customers. We believe that our responsibility does not end with the sale of our products; instead, we are committed to providing ongoing support and assistance.

Our dedicated team is available to address any inquiries, concerns, or technical issues that our customers may have. We offer prompt and efficient after-sales service, including technical support, troubleshooting, and maintenance assistance. We value long-term relationships with our customers and strive to be their reliable partner even after the sale is complete.



# QUALITY STANDARDS:

Quality is the cornerstone of our operations at RCO Engineering. We are committed to maintaining the highest quality standards across all aspects of our business. From the selection of raw materials to the manufacturing process and final product delivery, we adhere to strict quality control measures.

Our products undergo rigorous testing and inspections to ensure they meet or exceed industry standards. We continually invest in advanced technologies and equipment to enhance our manufacturing processes and guarantee superior quality. We take pride in the durability, reliability, and performance of our products, providing our customers with peace of mind and confidence in their investment.

We are dedicated to continuous improvement and regularly review our quality management systems to identify areas for enhancement. Our commitment to quality extends beyond our products to every interaction and service we provide, ensuring that our customers receive exceptional value and satisfaction.

At RCO Engineering, customer satisfaction, customization, after-sales services, and quality standards are integral to our business philosophy. We strive to deliver the best possible experience for our customers, ensuring their needs are met, and their expectations are exceeded. With a focus on excellence in all





# CLIENTS



# CLIENTS





# CUSTOMER SATISFACTION:

At RCO Engineering, customer satisfaction is at the forefront of our business. We understand that our success is directly linked to the satisfaction of our valued clients. Therefore, we strive to exceed customer expectations by providing exceptional products and services.

We prioritize open communication with our clients, actively listening to their needs, requirements, and feedback. By understanding their unique challenges and goals, we can tailor our solutions to meet their specific demands. We are committed to building strong and long-lasting relationships with our customers, based on trust, reliability, and mutual respect.



# CONTACT DETAILS:



## **Factory Address:**

Plot # 27, Sector 15, Korangi Industrial Area,  
Karachi Karachi, Sindh, Pakistan-75400



## **Karachi Office:**

403, Plot # 2Cm Phase V Ext, Badar  
Commercial Area, DHA, Karachi



## **Lahore Office:**

265 Y Block, Phase III, DHA, Lahore



(021) 35060302



+92 342 1878224



+92 333 3261792



[www.rcoengineering.com](http://www.rcoengineering.com)



[info@rcoengineering.com](mailto:info@rcoengineering.com)

